

# THE NEEDLE DANCER

The Tucson Chapter  
American Needlepoint Guild

March 2005



## Tucson Chapter ANG Board 2004-05

President	Margaret von Kuegelgen
VP Nights	Charleane Boyles
VP Days	Barbara Lewis
Treasurer	Mary Christoph
Director at Large	Barbara Richardson
Secretary Nights	Linda Harris
Secretary Days	Marj Jordan
Hospitality Days	Honey Montrose
Hospitality Nights	
Workshop Chairman	Dorothy Green
Membership	Marge Martin
Membership Recruitment	
Newsletter	Angela Yardy
Publicity	Myldred Richardson
Community Projects	Dee Bregantini
Ways and Means Nights	
Ways and Means Days	Jo Middlestead
Historian	Kay Kopp
National Web Site Contact	Martha Hirsch
E-mail reminder, brochures	Sylvia Gergen
Document Research	Mary Flynn
Tax ID number	Pat Britton



# Calendar

## March 2005

SUN	MON	TUE	WED	THU	FRI	SAT
		1	2	3	4	5
6	7	8	9 6:30pm Board Meeting	10	11	12
13	14	15	16	17	18	19 10am-5pm Stitch-In
20	21	22	23 6pm Night Meeting	24 10:30am-3pm Day Meeting	25	26
27	28	29	30	31		

## April 2005

SUN	MON	TUE	WED	THU	FRI	SAT
					1	2
3	4	5	6	7	8	9
10	11	12	13 6:30pm Board Meeting	14	15	16 10am-5pm Stitch-In
17	18	19	20	21	22	23
24	25	26	27 6pm Night Meeting	28 10:30am-3pm Day Meeting	29	30

## May 2005

SUN	MON	TUE	WED	THU	FRI	SAT
1	2	3	4	5	6	7
8	9	10	11 6:30pm Board Meeting	12	13	14
15	16	17	18	19	20	21 10am-5pm Stitch-In
22	23	24	25	26 6pm Joint Meeting/pot luck	27	28
29	30	31				

**Night Meeting:** Streams in the Desert Lutheran Church, 5360 E Pima (1/2 block w. of Craycroft)

**Day Meetings:** Pima County Medical Society Building (5199 E Farness Dr)

**Board Meeting:** Bookman's community classroom at 6230 E. Speedway (southwest corner of Wilmot and Speedway), second Wednesday of the month at 6:30pm

**Stitch-Ins:** The West Classroom (River & Craycroft Roads), 10am– 5pm

**Hospitality for March:** – Marj Jorden and Barbara Lewis - day meeting  
Charleane Boyles and Deane Pape – night meeting

**Opportunity Gift for March: provided by Guild!**

# President's Letter

Margaret von Kuegelgen

Dear Fellow Stitchers:

Our Stitch by Committee programs in February were very successful. We are planning on continuing them and doing some variations on the theme. Our programs for March and April are excellent also. See the program details in the newsletter.

We will be having a meeting in April to plan the programs for the next year. Everyone is invited. If you are interested in coming, please let me know. If you can't attend and have ideas for programs, contact Barbara Lewis or Charleane Boyles or me. All suggestions are welcome.

Remember to check the newsletter for your dues due announcement. We are missing renewal dues from about 26 people!

See you at the March meeting.

Regards, Margaret

## Programs 2004-2005

Charleane Boyles (nights)  
Barbara Lewis (days)

This month -

### **TO BEAD OR NOT TO BEAD-----THAT IS THE QUESTION!!**

Do you put the bead in the ditch or on the intersection, one thread or two, what size bead? All good questions that Carol Karrle is going to cover...everything from congress cloth to 14 or 18 ct. canvas. The different sizes of beads will be covered as well as the different threads available. Bring doodle cloth and bead wax if you have it....we will provide beads and beading needles.

April - You have just finished stitching your painted canvas and all you have left is the background....now what to do, what to do! Well, Barbara Richardson will help you out. She is going to show different background stitches...so bring your doodle cloth and thread.

May will be a POT LUCK!! It is May 26th at Streams of the Desert Lutheran Church, one block west of Craycroft, on Pima. 6 PM. "silver and china" and drinks will be provided. This is the chance to show off one of your favorite recipes.... We will have the election and then have some fun. Think beautifully wrapped gift.....go all out!!!

More info next newsletter...see you at the meetings....bring friends!.

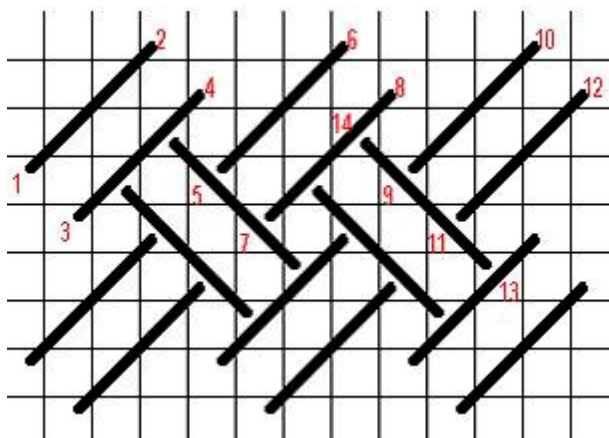
Barb and Charlene, your friendly program-meisters!

## Stitch of the Month is Woven Trellis led by Donna Lawrence – day meeting

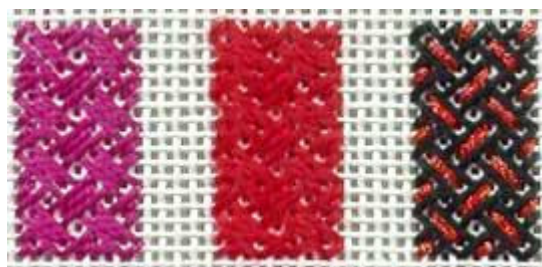
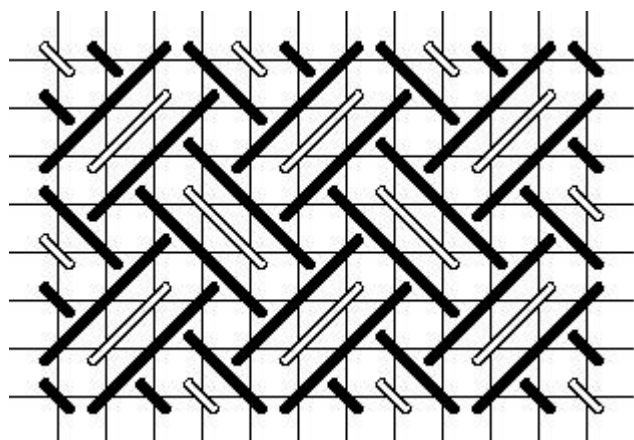
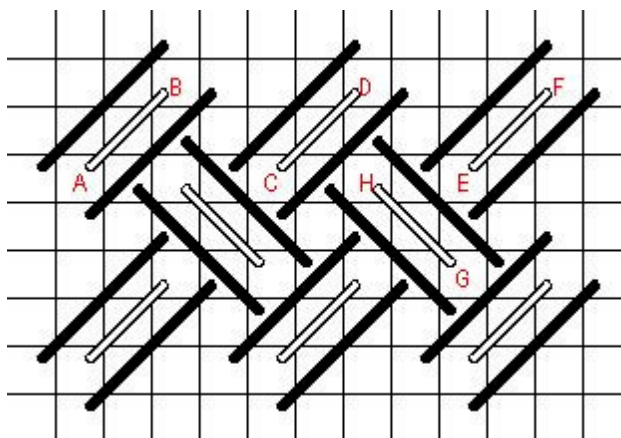
Angie Valencia – night meeting

Woven Trellis is another stitch that can be used to give the appearance of a trellis. This stitch is worked in two steps.

First work Step 1 in horizontal rows across the entire area. Compensate as necessary around the edges (refer to the final chart).



Fill in Step 2. Depending on your choice of threads, a variety of effects can be achieved. If the same thread is used for both steps, you have a nice, subtle textured background. For a different look, use the same color, but different types of threads for each step -- for example, work Step 1 in wool and use pearl cotton for Step 2. For a very dramatic look, use different threads and colors for each step -- black pearl cotton for Step 1 and a red metallic for Step 2. The number of deferment looks is limited only by your willingness to experiment.



## **Update for March**

The Seminar Faculty Committee meeting in Kansas City was very exciting and hard work. The SFC committees three members worked very hard soliciting the proposals and keeping us on a schedule. There were over 280 proposals to review and select for the slate of classes that will be taught in Tucson. Classes will range from beginner to advance level and will offer the participants a wide range from which to choose. I am unable to give you specifics as to what the classes will be and which teachers have been chosen, since contracts are now being sent out for the approval by the teachers.

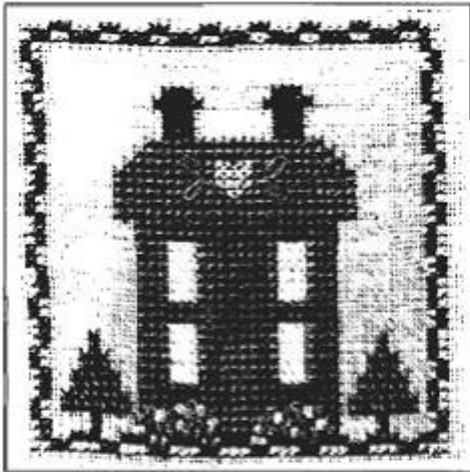
**The scissor cases for Life Patron favors are moving along at a terrific rate and the scissors have also arrived, so one project is now in the completion stages. Remember as you finish, please turn the cases in to Earla Swope or Dorothy Green for the next step. Again many thanks to all that have or are stitching.**

Since only four members of the National Board are in attendance at the SFC selection meeting (President, VP for Education, Director of Seminars and Director-Elect of Seminars), all the questions I had were to be presented to the full board during their regular business meeting (which was the Saturday evening through Tuesday after the SFC meeting). Their meeting has now been completed and I am happy to report that questions have been answered and favors approved. We will be having another Seminar Committee meeting in the near future and hopefully I will have samples ready for all to see.

Suggestions for the table centerpieces for the Tucson Seminar and also for the items to be sold at Tucson EXPO are still being received and considered. So if you have an idea please let me know and if you have a price for that item, we will be making decisions on these at the next meeting.

For the Nashville EXPO sales we have: scissor cases with matching tassels, decorated magnets, needle cases, beaded thread counters, decorated needle threaders, needlepoint charts, the remainder of the luggage tags from the invitation favors and beaded scissor fobs. We will also be selling and begin taking orders for the Tucson Seminar Shirts.

*As always in stitches and friendship,  
Barbara*



3" X 3"

# Spring Sampler House

A Pam Miller Design for

*Rainbow Gallery*

## MATERIALS

28 Ct. Lambswool Linen by Wichelt 9" x 9"

1 card each of Mandarin Floss

◇ M802 – White

‡ M805 – Lite Antique Mauve

\* M820 – Camel

○ M821 – Dark Beige

≡ M824 – Deep Wedgewood

★ 1 strand M817 – Cedar and

1 strand M819 – Midnight Green

French Knots: M804 – Medium Raspberry,

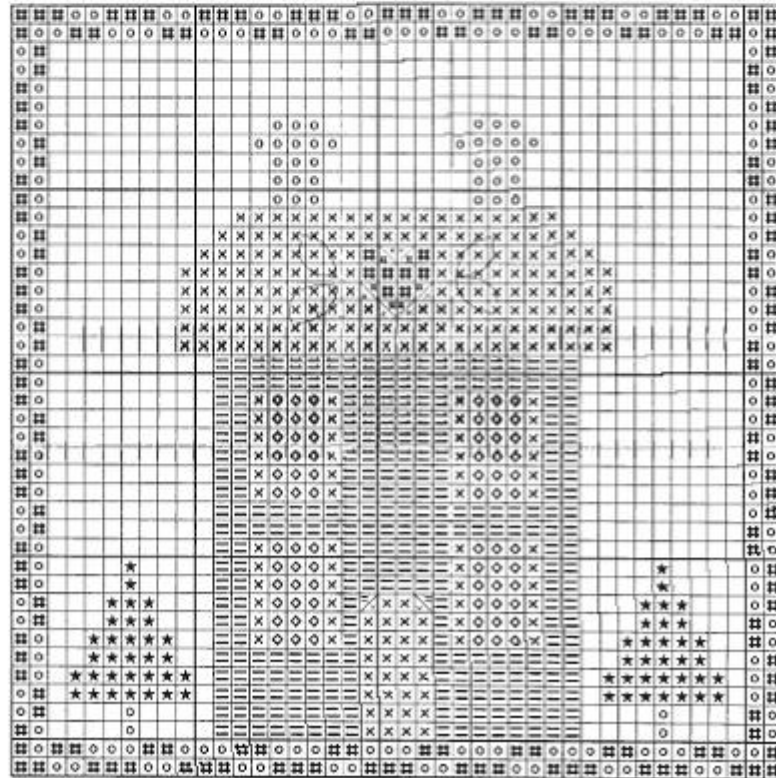
M807 – Lite Violet, M813 - Yellow

1. Cross stitch according to chart using 2 ply Mandarin Floss. This is a 6 ply floss. You will need to separate and use 2 ply. For the trees, use 1 ply M817 & 1 ply M819.

2. Stitch Lazy Daisy's on each side of heart on roof with 2 ply M817 as on chart.

3. For door knob do a French Knot with 1 ply M821.

4. Randomly place French Knot flowers under the windows in 2 ply M807, M813, M804. Add a few French Knots in-between with M817 to fill in for greenery.



©Rainbow Gallery 2005  
May be photocopied for  
free distribution.

**Members please read secure area of website for information on membership.**

**Please read** – If your name is listed on the Renewal List, please return the **completed** form with your check in order to keep our records up-to-date. The National ANG office no longer gives a month’s grace period for renewal of dues. It is imperative your check be received by the membership chairman by the date stated on the form, or sooner, to avoid being dropped by National and not receiving your Needle Pointers magazine. **Please advise if you do not intend to renew.** If there is a red dot on your label, this is your last newsletter until dues are received.

The following members are **past due** on renewals. If you do not plan to renew please let Marge Martin know, otherwise a check for your dues should be forth coming **as soon as possible** (ASAP). Your membership expires on **1 April**, 2005. If you have a red dot on your label, this is your last newsletter. Cosentino C, Crawford H, J. Jones, Juell J (P), Karrle C, Komar C, Lamar J, Larsen J, Little B (P), Mahoney J, McNealy M, McNeill J, Murray J, Nickerson J, Parsons M, Quillen S, Sorlie E, Spangler J, Staneslow C, Thomas G, Wood J.

Please send any changes of address to Marge Martin

~~~~~cut here~~~~~

### AMERICAN NEEDLEPOINT GUILD MEMBERSHIP DUES NOTICE

Name \_\_\_\_\_ Phone \_\_\_\_\_

Street Address \_\_\_\_\_

City and State \_\_\_\_\_ ZIP + 4 \_\_\_\_\_ - \_\_\_\_\_

e-mail: \_\_\_\_\_ FAX: \_\_\_\_\_

Tucson Chapter Member \$ 41.00

(P) Plural Member \$ 12.00

ANG Member Number \_\_\_\_\_

### **IF YOU DO NOT PLAN ON RENEWING - PLEASE ADVISE**

Please make checks payable to: **TUCSON CHAPTER ANG**

Send to: Marge Martin

**the West**<sup>NC</sup>


**NEEDLEWORK**  
 Gifts & Jewelry  
 Paper Products  
 Cards & Cookbooks  
 Toys & Infant Items

**Needlework Show March 14th-19th Vote your favorite entry!**  
**Sidewalk Sale April 1st & 2nd**  
**Special class by Jay Patterson of Rainbow Gallery April 13th, 6pm-9pm**  
**Fee 50.00 Samples and door prizes!**

*Over \$1,600,000 in grants to local charities since 1981!*

Proceeds Benefit Women's and Children's Charities    Open Monday—Saturday 10-5    5615 E. River Rd., Tucson 299-1044

**THE BUSY NEEDLE**



Tucson's complete needlework shop has everything you need to express your creativity and more...

- Over 300 finished models • Complete assortment of buttons from JABC
- Hand dyed fabrics (sida and Linen) and threads
- Enormous thread wall selection • Complete professional finishing
- Frames from Hog River, and Wood'n Needle
- Classes from beginner to advanced

2840 W. Ina Rd. # 156 • Tucson, AZ 85741

**20% Off Needlepoint Curves! During Trunk Shows**

Make a beeline to the Busy Needle's  
**Trunk Show**  
 March 1<sup>st</sup> - March 31<sup>st</sup>  
 Kathy Schenkel Design

Mon-Sat 10-5 • Thurs. 10-8  
 busyneedle.com(520) 229-1977

**OVER 1800 SQUARE FEET OF NEEDLEWORK HEAVEN**

**THE NEEDLE DANCER**  
**American Needlework Guild**  
**4100 N Fernhill Circle**  
**Tucson AZ 85750**